



Funding projects in the areas of health and nutrition, basic care and education.



Our goal is to support sustainable projects that positively impact the lives of people in need within the communities where we operate.

Highlights of 2025

In 2025, we donated: **€4m**

Our funds went to: **69** projects | **20** countries globally



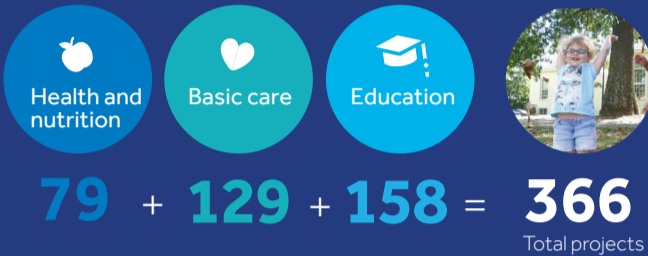
Our contribution so far

Investment 2012 – 2025 **€22m**

366 projects > **32** across countries



Our strategic priorities



Our areas of impact



What we were proud to deliver

Helping ensure everyone has an opportunity to engage in art, culture, sport and healthy play in their communities. We helped fund:

46 Play areas, sensory rooms and gardens
35 Sport, art and culture facilities

Assisting those marginalised in society find a place of safety by funding:

28 Community support facilities
9 Humanitarian aid projects
13 Specialist transport facilities
16 Mental health, homelessness and domestic abuse support



Ensured people received access to education. We helped deliver:

30 School building and refurbishment projects
17 Provision of school equipment
35 Education facilities and outreach programmes



Where people had assessed additional needs, disabilities or illnesses. We helped arrange:

9 Upgrade of hospital facilities
49 Specialist centres for those with assessed additional needs
17 Specialist support centres
18 Respite and rehabilitation projects



Directly assisting children in need. We helped support:

17 Centres for disadvantaged children
12 Childcare and parental support
15 Facilities for children

